



Foto tomada por Erick Fernández S., OVSICORI-UNA

A woman with long dark hair, wearing a grey long-sleeved shirt and blue jeans, is walking away from the camera on a paved area. In the background, there are two white buses, a small yellow building, and a larger building with corrugated metal walls. The sky is overcast with dark clouds. A white circle in the top right corner contains the text '1b' and '2b'.

1b
2b

An aerial photograph of a densely populated residential area, likely a favela or informal settlement. The houses are packed closely together, with roofs in various colors including red, orange, yellow, green, and blue. A network of roads and paths winds through the neighborhood. There are some open green spaces and a large blue cylindrical water tank visible in the lower right quadrant. The overall scene depicts a vibrant and crowded urban environment.

1b
2b

An aerial photograph of a coastal city, likely Vancouver, with a massive, towering wave crashing over the buildings. The wave is white and turbulent, dominating the upper half of the frame. The city below features a mix of residential and commercial buildings, including a prominent tall skyscraper on the right. The sky is dark and stormy. A large white circle with the number '3' is in the top right corner.

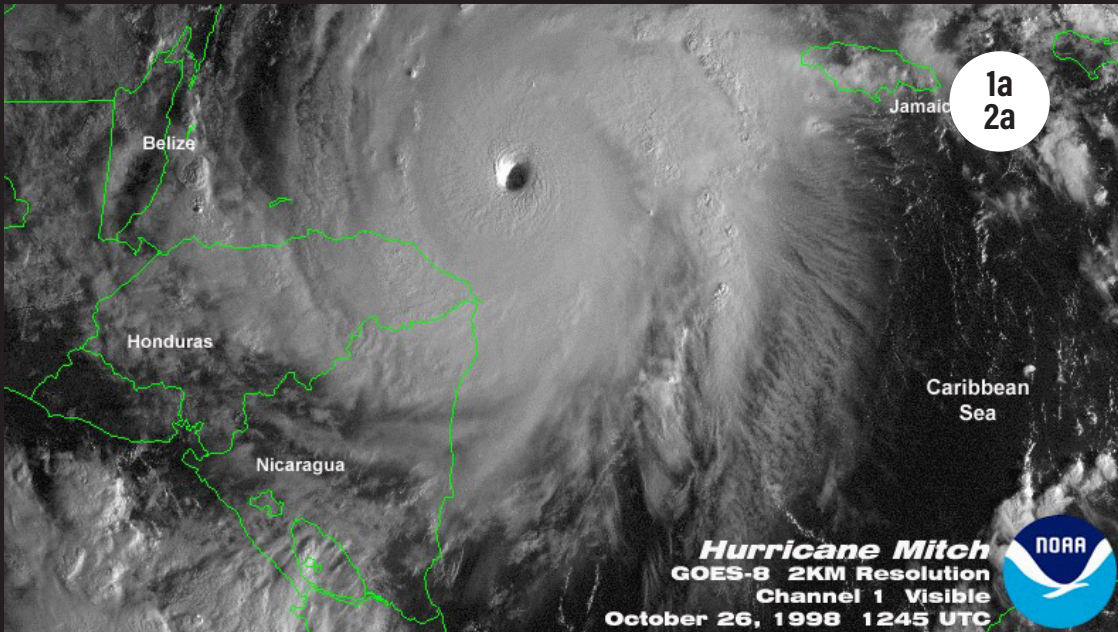
3



1a
2a



1a
2a



Belize

Honduras

Nicaragua

Jamaica

Caribbean
Sea

1a
2a

Hurricane Mitch
GOES-8 2KM Resolution
Channel 1 Visible
October 26, 1998 1245 UTC



A photograph of a volcanic eruption. A large, dark mountain peak is visible on the left, with a massive plume of white ash and smoke rising from its summit and spreading across the sky. The foreground shows a dark, silhouetted tree against a bright, hazy background. In the top right corner, there is a circular graphic containing the text '1a' and '2a' stacked vertically.

1a
2a

3



1b
2b



1a
2a

1b
2b

